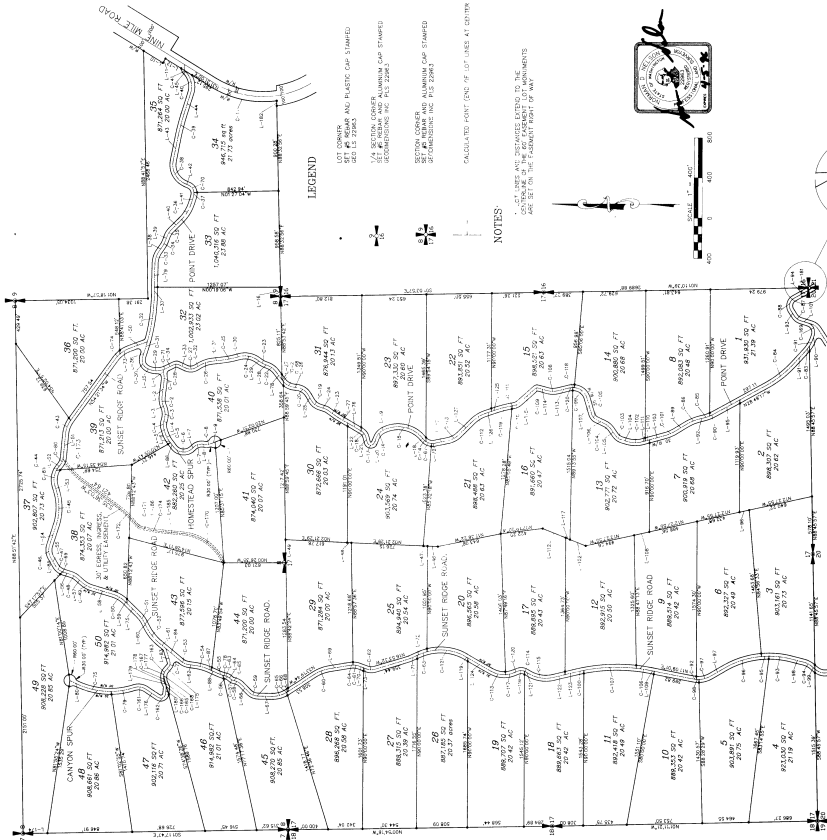




# NINE MILE RANCH DIVISION I

T. 40N., R. 28E., W.M.  
SECTION 9, SECTION 10,  
AND ALL OF SECTION 8,  
OKANOGAN COUNTY, WASHINGTON



### LEGEND

- 1. LOT CORNERS
- 2. SET BY ROSS AND PLASTIC CAP STAMPED 2011 12 22/83
- 3. SET BY WELLS AND ALUMINUM CAP STAMPED 2011 12 22/83
- 4. SET BY WELLS AND ALUMINUM CAP STAMPED 2011 12 22/83
- 5. SET BY WELLS AND ALUMINUM CAP STAMPED 2011 12 22/83
- 6. SET BY WELLS AND ALUMINUM CAP STAMPED 2011 12 22/83
- 7. SET BY WELLS AND ALUMINUM CAP STAMPED 2011 12 22/83
- 8. SET BY WELLS AND ALUMINUM CAP STAMPED 2011 12 22/83
- 9. SET BY WELLS AND ALUMINUM CAP STAMPED 2011 12 22/83
- 10. SET BY WELLS AND ALUMINUM CAP STAMPED 2011 12 22/83
- 11. SET BY WELLS AND ALUMINUM CAP STAMPED 2011 12 22/83
- 12. SET BY WELLS AND ALUMINUM CAP STAMPED 2011 12 22/83
- 13. SET BY WELLS AND ALUMINUM CAP STAMPED 2011 12 22/83
- 14. SET BY WELLS AND ALUMINUM CAP STAMPED 2011 12 22/83
- 15. SET BY WELLS AND ALUMINUM CAP STAMPED 2011 12 22/83
- 16. SET BY WELLS AND ALUMINUM CAP STAMPED 2011 12 22/83
- 17. SET BY WELLS AND ALUMINUM CAP STAMPED 2011 12 22/83
- 18. SET BY WELLS AND ALUMINUM CAP STAMPED 2011 12 22/83
- 19. SET BY WELLS AND ALUMINUM CAP STAMPED 2011 12 22/83
- 20. SET BY WELLS AND ALUMINUM CAP STAMPED 2011 12 22/83
- 21. SET BY WELLS AND ALUMINUM CAP STAMPED 2011 12 22/83
- 22. SET BY WELLS AND ALUMINUM CAP STAMPED 2011 12 22/83
- 23. SET BY WELLS AND ALUMINUM CAP STAMPED 2011 12 22/83
- 24. SET BY WELLS AND ALUMINUM CAP STAMPED 2011 12 22/83
- 25. SET BY WELLS AND ALUMINUM CAP STAMPED 2011 12 22/83
- 26. SET BY WELLS AND ALUMINUM CAP STAMPED 2011 12 22/83
- 27. SET BY WELLS AND ALUMINUM CAP STAMPED 2011 12 22/83
- 28. SET BY WELLS AND ALUMINUM CAP STAMPED 2011 12 22/83
- 29. SET BY WELLS AND ALUMINUM CAP STAMPED 2011 12 22/83
- 30. SET BY WELLS AND ALUMINUM CAP STAMPED 2011 12 22/83
- 31. SET BY WELLS AND ALUMINUM CAP STAMPED 2011 12 22/83
- 32. SET BY WELLS AND ALUMINUM CAP STAMPED 2011 12 22/83
- 33. SET BY WELLS AND ALUMINUM CAP STAMPED 2011 12 22/83
- 34. SET BY WELLS AND ALUMINUM CAP STAMPED 2011 12 22/83
- 35. SET BY WELLS AND ALUMINUM CAP STAMPED 2011 12 22/83
- 36. SET BY WELLS AND ALUMINUM CAP STAMPED 2011 12 22/83
- 37. SET BY WELLS AND ALUMINUM CAP STAMPED 2011 12 22/83
- 38. SET BY WELLS AND ALUMINUM CAP STAMPED 2011 12 22/83
- 39. SET BY WELLS AND ALUMINUM CAP STAMPED 2011 12 22/83
- 40. SET BY WELLS AND ALUMINUM CAP STAMPED 2011 12 22/83
- 41. SET BY WELLS AND ALUMINUM CAP STAMPED 2011 12 22/83
- 42. SET BY WELLS AND ALUMINUM CAP STAMPED 2011 12 22/83
- 43. SET BY WELLS AND ALUMINUM CAP STAMPED 2011 12 22/83
- 44. SET BY WELLS AND ALUMINUM CAP STAMPED 2011 12 22/83
- 45. SET BY WELLS AND ALUMINUM CAP STAMPED 2011 12 22/83
- 46. SET BY WELLS AND ALUMINUM CAP STAMPED 2011 12 22/83
- 47. SET BY WELLS AND ALUMINUM CAP STAMPED 2011 12 22/83
- 48. SET BY WELLS AND ALUMINUM CAP STAMPED 2011 12 22/83

### NOTES

1. THIS PLAT IS SUBJECT TO THE EASEMENTS AND RESTRICTIONS SHOWN THEREON.

2. THE AREA SHOWN AS "CALCULATED POINT" IS NOT TO BE CONSIDERED AS PART OF THE EASEMENT POINT OF VIEW.

3. THE AREA SHOWN AS "CALCULATED POINT" IS NOT TO BE CONSIDERED AS PART OF THE EASEMENT POINT OF VIEW.

4. THE AREA SHOWN AS "CALCULATED POINT" IS NOT TO BE CONSIDERED AS PART OF THE EASEMENT POINT OF VIEW.

5. THE AREA SHOWN AS "CALCULATED POINT" IS NOT TO BE CONSIDERED AS PART OF THE EASEMENT POINT OF VIEW.

6. THE AREA SHOWN AS "CALCULATED POINT" IS NOT TO BE CONSIDERED AS PART OF THE EASEMENT POINT OF VIEW.

7. THE AREA SHOWN AS "CALCULATED POINT" IS NOT TO BE CONSIDERED AS PART OF THE EASEMENT POINT OF VIEW.

8. THE AREA SHOWN AS "CALCULATED POINT" IS NOT TO BE CONSIDERED AS PART OF THE EASEMENT POINT OF VIEW.

9. THE AREA SHOWN AS "CALCULATED POINT" IS NOT TO BE CONSIDERED AS PART OF THE EASEMENT POINT OF VIEW.

10. THE AREA SHOWN AS "CALCULATED POINT" IS NOT TO BE CONSIDERED AS PART OF THE EASEMENT POINT OF VIEW.



PLAN NO. 94701  
 SHEET 2 OF 2  
 OKANOGAN COUNTY WASHINGTON  
 DATE 12-27-24 DRAWN BY [Name] CHECKED BY [Name]

**GeoDimensions**  
 1000 17th Street, Suite 100  
 Bellingham, WA 98225  
 Phone: 360.738.1234  
 Fax: 360.738.1235  
 Email: info@geodimensions.com

DATE	12-27-24
DRAWN BY	[Name]
CHECKED BY	[Name]
SCALE	AS SHOWN